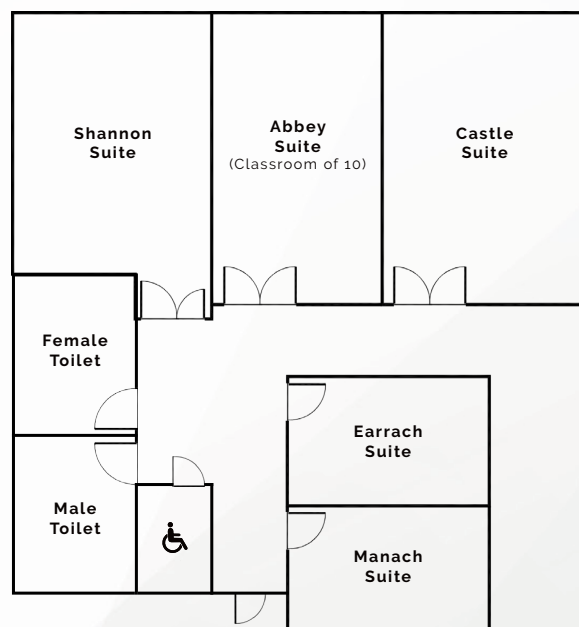


New Conference Centre

Meeting Room Capacity

	Boardroom	Theatre	Classroom	U-Shaped
Shannon Suite	12	20	16	12
Abbey Suite	16	30	14	16
Castle Suite	16	44	20	20
Earrach Suite	6	-	-	-
Manach Suite	6	-	-	-

Floor Plan

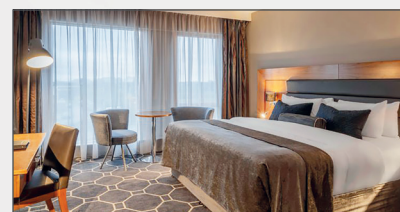


Meeting Room Capacity

	Shannon	Abbey	Castle	Earrach	Manach
Length	6	6.8	6.8	4.6	4.6
Width	4.5	3.8	5.05	2.9	2.95
Height	2.7	2.7	2.7	2.7	2.7
Area m2	2.7	25.84	34.34	13.34	13.57
Door height	2.3	2.3	2.3	2.3	2.3
Door width	1.37	1.6	1.6	0.8	0.8

Facilities

	Shannon	Abbey	Castle	Earrach	Manach
Air Con	Yes	Yes	Yes	Yes	Yes
Wi-Fi	Yes	Yes	Yes	Yes	Yes
No. of Sockets	12	12	12	6	6
Wheelchair Accessible	Yes - with lift	Yes - with lift	Yes - with lift	Yes - with lift	Yes - with lift
Natural Light	Yes	Yes	Yes	-	-



Equipment

Each meeting suite has everything your meeting could possibly need, including state of the art AV equipment, that can be connected via HDMI or wireless connection along with flipchart, paper, pens, mints and filtered water. A dedicated member of staff will be on hand to assist you on the day of your conference.

Delegate Dining

Break time refreshments

	Price Per Person
Tea/Coffee	€2.95
Tea/Coffee & Homemade Biscuits	€3.95
Tea/Coffee & Freshly Baked Pastries	€4.95
Tea/Coffee & Homemade Scones (with fresh cream & country jam)	€5.50
Tea/Coffee & Homemade Chocolate Brownie Bites	€4.95
Energise & Indulge: Mini Fruit Smoothies, Toasted Granola Pots, Fruit Skewers & Orange Juice	€6.95
Afternoon Tea: A Selection of Mini Scones, Parisian Pastries, Mini Muffins, Brownie Bites & Fresh Fruit Meringue Nests served with Freshly Brewed Tea/Coffee	€8.95
Fruit Bowl (serves 10 delegates)	€20.00

Light bites

Sharing Hot Platter - Selection of Four Light Bites served with Dipping Sauce	€9.95
---	-------

Please ask events when booking for your options.

Dining options at Cedar Brasserie & Bistro

Chefs Selection of Freshly Made Sandwiches, Wraps & Baps	€9.95
Chefs Homemade Soup of the Day with a Selection of Freshly Made Sandwiches, Wraps & Baps	€12.95
Main Course with Tea/Coffee	€15.95
Two Courses with Tea/Coffee	€20.95
Three Courses with Tea/Coffee	€23.95



What you need to know

- We are 1 hour and 20 minutes from Dublin City
- We are 1 hour from Galway City
- Eircode: N37 F9T3
- Location off Junction 13 on the M6 motorway

Transport

- Train/Bus station is located just over 6km from the hotel and is a 9 minute taxi drive

What does each event in the Athlone Springs Hotel contain?

- Fresh Still & Sparkling Water
- Conference Pads
- Pencils
- Printing & Photocopying (at an additional charge)
- High Speed WI-FI
- VGA and HDMI projectors and adaptors
- Smart TV's – between 62" – 75"
- Flipchart paper and markers
- On hand Manager or Conference Co-Ordinator to assist you should you need it
- Air Conditioning
- Natural Light
- Reduced accommodation rates for your event
- Complimentary Car Parking (300)



Majority of our meeting rooms are not set to one particular seating style, we are flexible and try to accommodate all of our clients as best as possible, whilst also it is important to note our large Clonellan Suite Partitions into four.

Floor plan

Meeting Room Capacity

	Boardroom	Theatre	Classroom	U-Shaped	Banquet	Ceiling Height	Height X Width	M2
Clonellan 1+2	-	400	180	-	320	3.2	21.5 x 15.8	340
Clonellan 1	40	240	72	40	160	3.2	13.3 x 15.4	205
Clonellan 2	30	144	48	-	80	3.2	8.3 x 15.9	132
Pre-Conference Suite	20	66	-	27	50	3.2	8.4 x 8.6	70
The Burnbrook	20	68	16	20	40	3.2	8.6 x 6.5	56
The Millbrook	20	50	18	20	32	3.2	8.3 x 4.5	37
Syndicate	8	8	8	-	-	3.2	3.3 x 6.8	23
Garden Suite	24	60	36	18	30	-	-	-

Meeting Room Specification Details - Dimensions

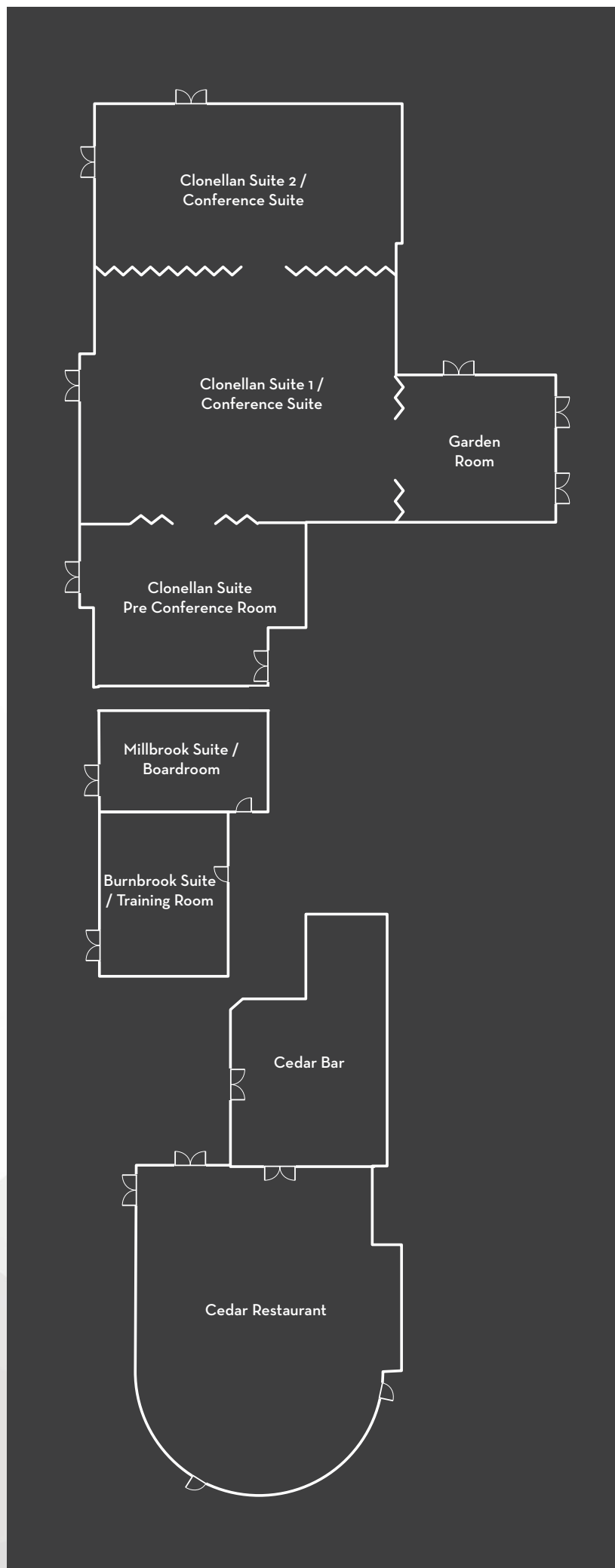
	Burnbrook	Millbrook	Clonellan 1	Clonellan 2	Pre-Conference
Length	8.6m	8.3m	13.3m	8.3m	8.4m
Width	65.m	4.5m	15.4m	15.9m	8.6m
Height	3.2	3.2	3.2	3.2	3.2
Area m2/ft2	53m2	39m2	205m2	132m2	70m2
Door Height	6ft8	6ft8	6ft8	6ft8	6ft8
Door Width	2ft10	2ft10	2ft10	2ft10	2ft10
Max Ceiling Height	11ft	11ft	11ft	11ft	11ft
Min Ceiling Height	11ft	11ft	11ft	11ft	11ft
Divides	No	No	3	1	1

Facilities

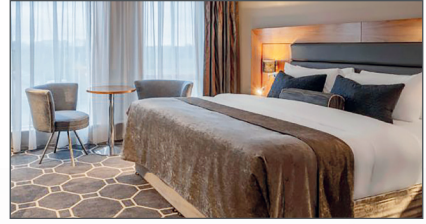
	Burnbrook	Millbrook	Clonellan 1	Clonellan 2	Pre-Conference
Air Conditioning	Yes	Yes	Yes	Yes	Yes
Broadband	Yes	Yes	Yes	Yes	Yes
Teleconference	No	No	Yes	No	No
Telephone ports	5	5	4	-	-
No of 13 amp sockets	10	6	38	-	-
Interpreting Equipment	For Hire	For Hire	For Hire	For Hire	For Hire
Wheelchair Accessible	Yes	Yes	Yes	Yes	Yes
Blackout Facilities	Yes	Yes	Yes	Yes	Yes
Natural Daylight	Yes	Yes	Yes	Yes	Yes
Elevator	Ground Level	Ground Level	Ground Level	Ground Level	Ground Level

Equipment

	Burnbrook	Millbrook	Clonellan 1	Clonellan 2	Pre-Conference
LCD Projector	Yes	Yes	Yes	Yes	Yes
Video/DVD	On Request	On Request	Yes	Yes	Yes
Drop Down Screen	Yes	Yes	Yes	Yes	Yes
Stage	No	No	Yes	Yes	No



Hotel Facilities



Accommodation

Athlone Springs Hotel has 68 bedrooms with bedrooms located on the first and second floor, two lifts are available for wheelchair or luggage access. Rooms are equipped with smart TV's, rain showers or baths available, high speed Wi-Fi and on hand reception team if required.

Interested in Corporate rates?

Why not enquire with our reservations team today at reservations@athlonespringshotel.com to get special rates for your conference or corporate requirements

Dining

- Cedar Restaurant catering for up to 200 delegates
- Clonellan Suite catering for up to 350 delegates for a Gala event
- Private dining options available upon request

Leisure Facilities

- Newly refurbished and fully equipped gym
- New studio room (classes available)
- 20 metre swimming pool
- Sauna
- Jacuzzi
- Steam room